



**The Estimated Economic Contribution Of
National Forests and Grasslands
*To Local Communities***

Data Envy:

2

- Seemingly simple question: What jobs and income in local economies are supported by FS land management? DOI does it...



- So why can't the FS do the same?

FS has been generating this type of information since the 1980's:

3

- Time for the 2 handed economist –
 - On the one hand, FS lucky to have a community of regional economists skilled in generating these numbers
 - On the other hand, many regional offices and forests don't have economists – reluctance on our part to let these numbers out on their own without a skilled interpreter in charge.

FS has been generating this type of information since the 1980's:

4

- Modus operandi in past, roll your own. Study area boundaries, data source, whether used annual or averaged figures, etc.
- The FS has provided tailored economic impact and economic contribution information for specific projects/plan revisions/regional assessments.
- National level for RPA* assessments
- But.. We've caved to pressure.
 - "Starter Models"

* Resources Planning Act 1974

Contribution Website

5

- **“Economic Contribution website”**
 - Pilot for major MUSYA* programs (recreation, wildlife and fish, timber, and range) plus minerals and energy, salary and non-salary expenditures, and returns to states. 2010
 - Recreation contribution: 2009 – 2012

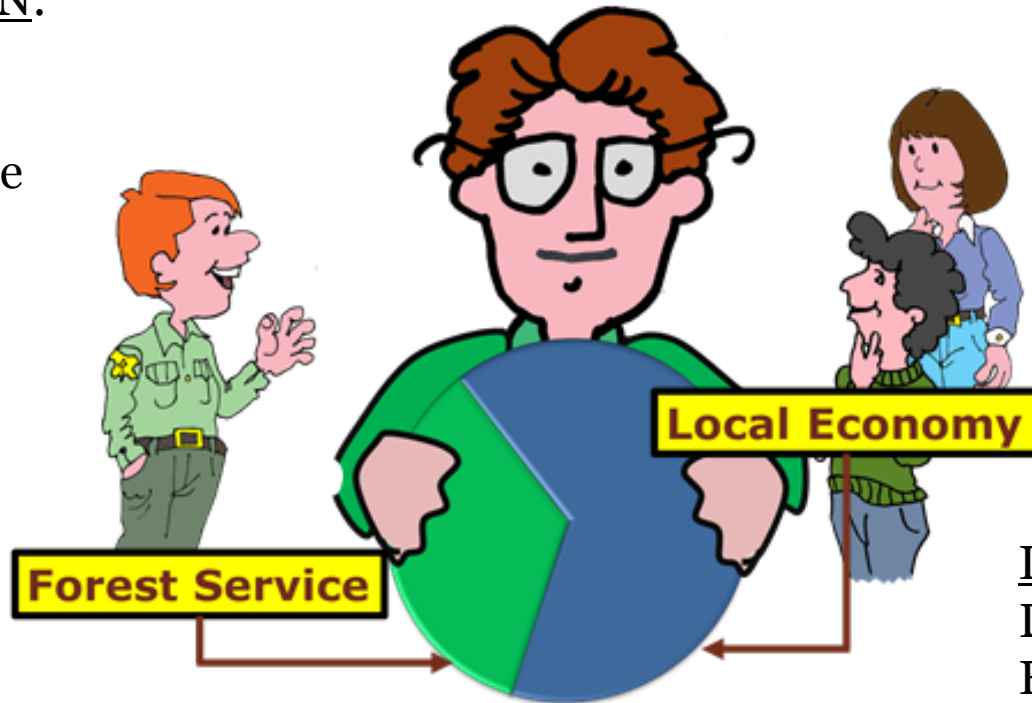
* Multiple Use Sustained Yield Act

Current Economic Conditions – What is FS's role?

6

CONTRIBUTION:

How big is the slice of the pie influenced by the FS?



IMPACT:

Does a change in FS management or policy change the size or ingredients of the pie?

The Three Legs of the Economic Contribution Stool

7



Private Sector
Jobs and Income

Government Investment In
Salaries and Non-Salary
Expenditures such as
Infrastructure, Restoration,
and Ecosystem Health

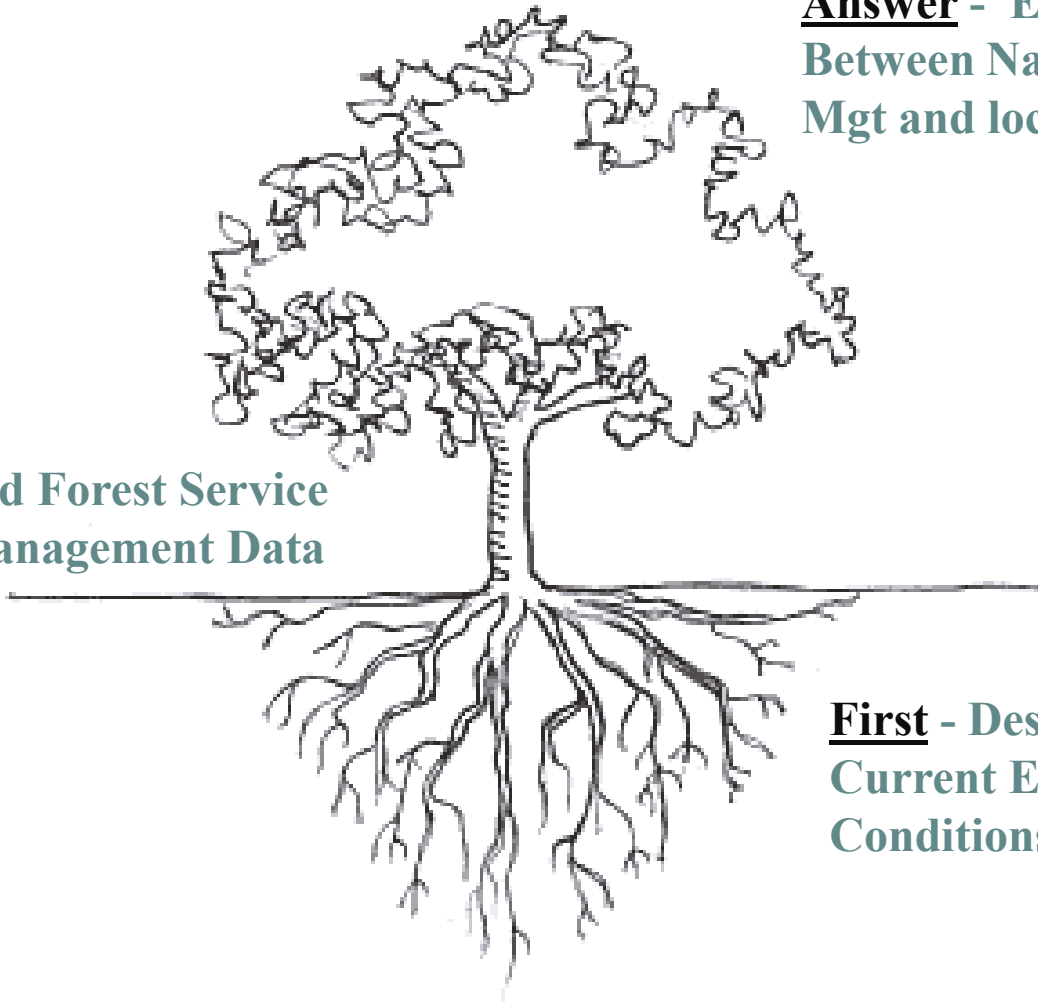
Secure Rural Schools
and other Returns to States

Components of an Economic Contribution Analysis

8

Answer - Estimate of Links
Between Natural Resource
Mgt and local economies

Second – Add Forest Service
Resource Management Data



First - Describe
Current Economic
Conditions

Economic Contribution Website



You are here: [Home](#) : [Temporary](#) : [NF Impacts: Total 2010 Group](#)

Topics

- [Home](#)
- [Glossary](#)
- [Frequently Asked Questions](#)

Report Criteria

Regional Totals

Select 2 or more Forests to Group:

- Northern Region 1
- Rocky Mountain Region 2
- Southwestern Region 3
- Intermountain Region 4
- Pacific Southwest Region 5
- Pacific Northwest Region 6
- Southern Region 8
- Eastern Region 9
- Alaska Region 10

- All Resources
- Total Recreation
- Recreation by Type
- Timber Products
- Livestock Grazing
- Minerals & Energy Production
- Payments to States/Countries
- FS Res Mgt Investments

- Employment
- Labor Income
- Gross Regional Product
- Employee Compensation
- Employee Comp per Job

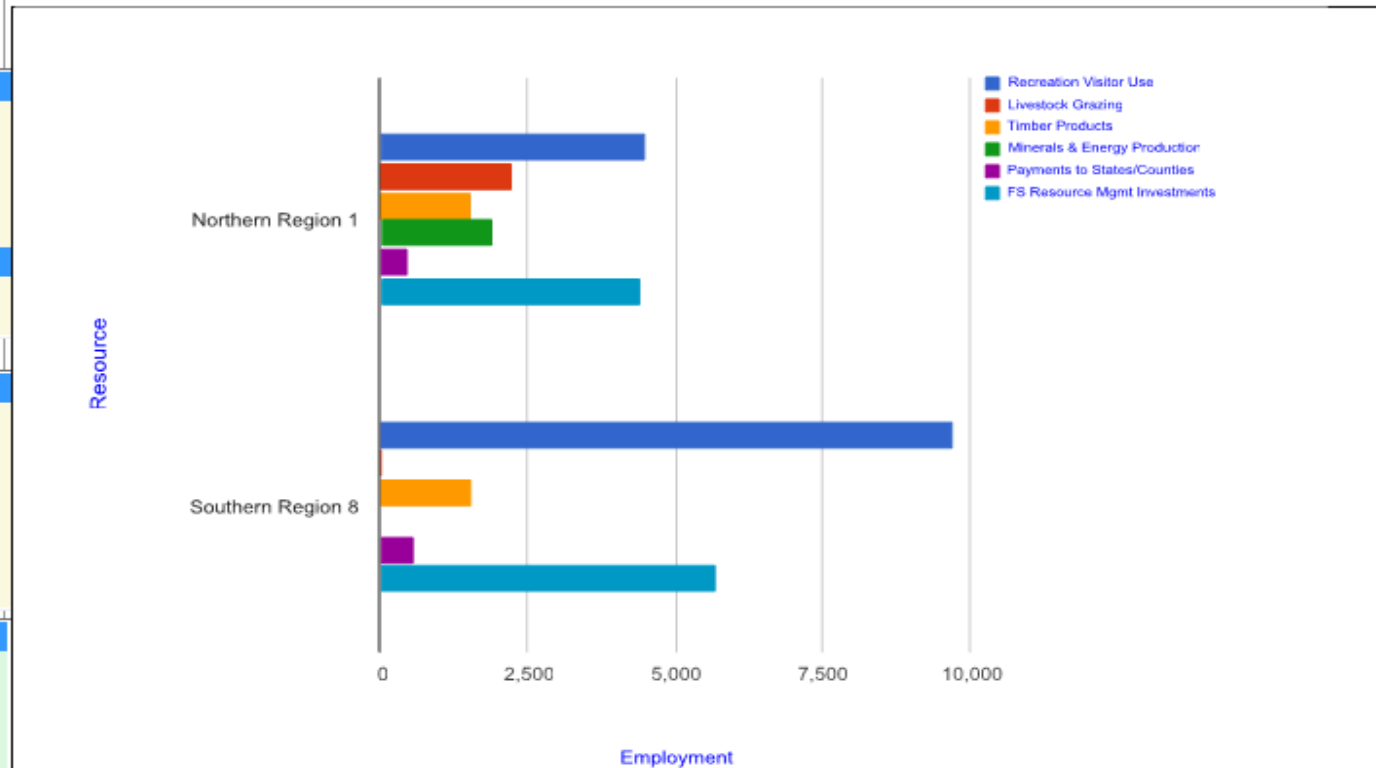
U.S. National Forest Units: Total Current Economic Contributions 2010

Multiple Forest Total Contribution Comparison

Northern Region 1, Southern Region 8

All Resources

Employment (# Avg Annual Jobs)





National Forest Economic Contributions

Intranet

You are here: [Home](#) : National Forest Recreation Economic Contributions

Website Search

Powered by [Google](#)

[FSWeb-wide Search](#)

Topics

- [Home](#)
- [All Resources Pilot](#)
- [Recreation-Only](#)
- [Glossary](#)
- [Frequently Asked Questions](#)

Featured Links

[Economic Center FSWeb](#)

Contacts

Susan Winter, (970) 295-5726, swinter@fs.fed.us

Doug Smith, (509) 684-7182, dhsmith@fs.fed.us

Kawa Ng, (970) 295-5733, knq@fs.fed.us

[Regional Contacts](#)

National Forest Recreation Economic Contributions

The reports in this website highlight various economic measures used to describe the economic contribution of just National Forest recreation to its local economy. The contribution for each Forest is described by its direct and secondary, or ripple, effects of its management policy and actions.

The National Forest Recreation Economic Contribution reporting includes local economic contributions for several years (currently FY 2009 - 2012).

Contribution Report Options for National Forests. Currently, only 2010 data is available. Click the buttons below to see the reports.

Total Contributions	Direct and Secondary	Aggregated by Industry	Visitor Use and Spending
2009	2009	2009	2009
2010	2010	2010	2010
2011	2011	2011	2011

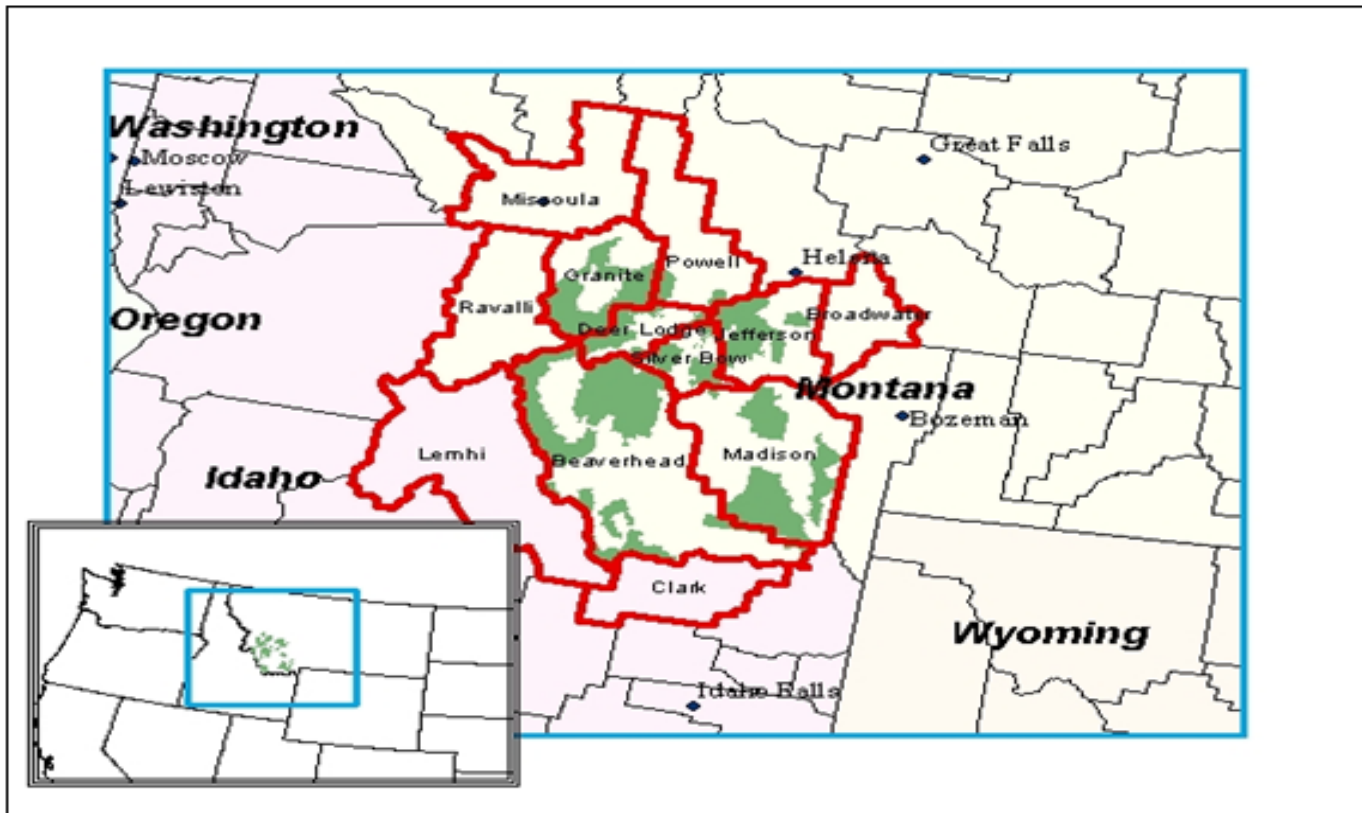
[See National Forests Analysis Areas: States and Counties](#)

Recreation Economic Contribution – Analysis Areas

11

- **National Forest Analysis Areas**

Beaverhead-Deerlodge NF



Beaverhead-Deerlodge

Economic Contribution – Data

12

- **By Program**
 - Recreation (NVUM)
 - Wildlife and Fish (NVUM)
 - Grazing (NRM)
 - Timber (ATSA, FIA TPO)
 - Minerals (NRM, ONRR)
 - Budget (FFIS)
 - Returns to States, PILT (FS RTS database, DOI)
- **By National Forest**

Economic Contribution – Recreation example

13

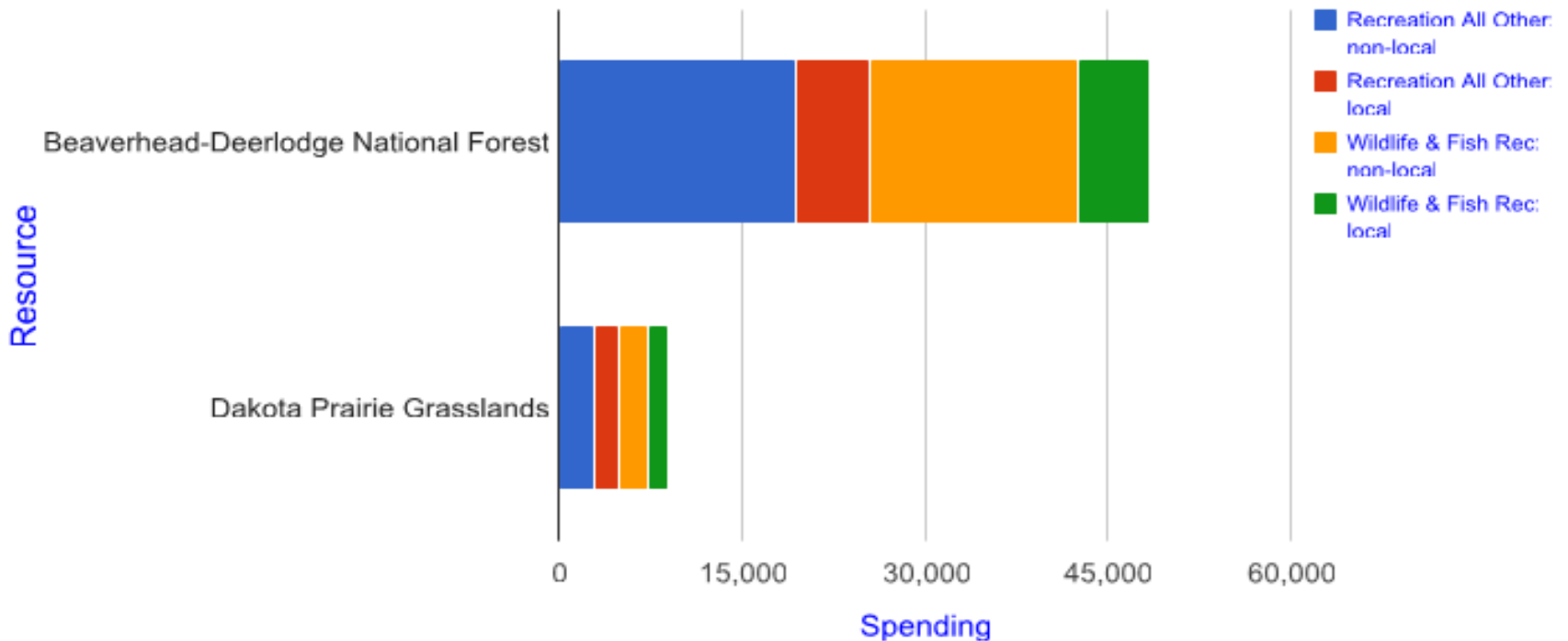
- **How we handle:**
 - Durable goods purchases,
 - Local vs. nonlocal,
 - How this differs from other studies (i.e. FWS/Census survey)
 - ✦ **Scale**
 - ✦ **What's included (i.e. durable goods, multi-ownership use)**
 - ✦ **Focus**

Recreation Economic Contribution - Spending

14

Beaverhead-Deerlodge, Dakota Prairie Grasslands

Spending (Thousands of 2012 Dollars)

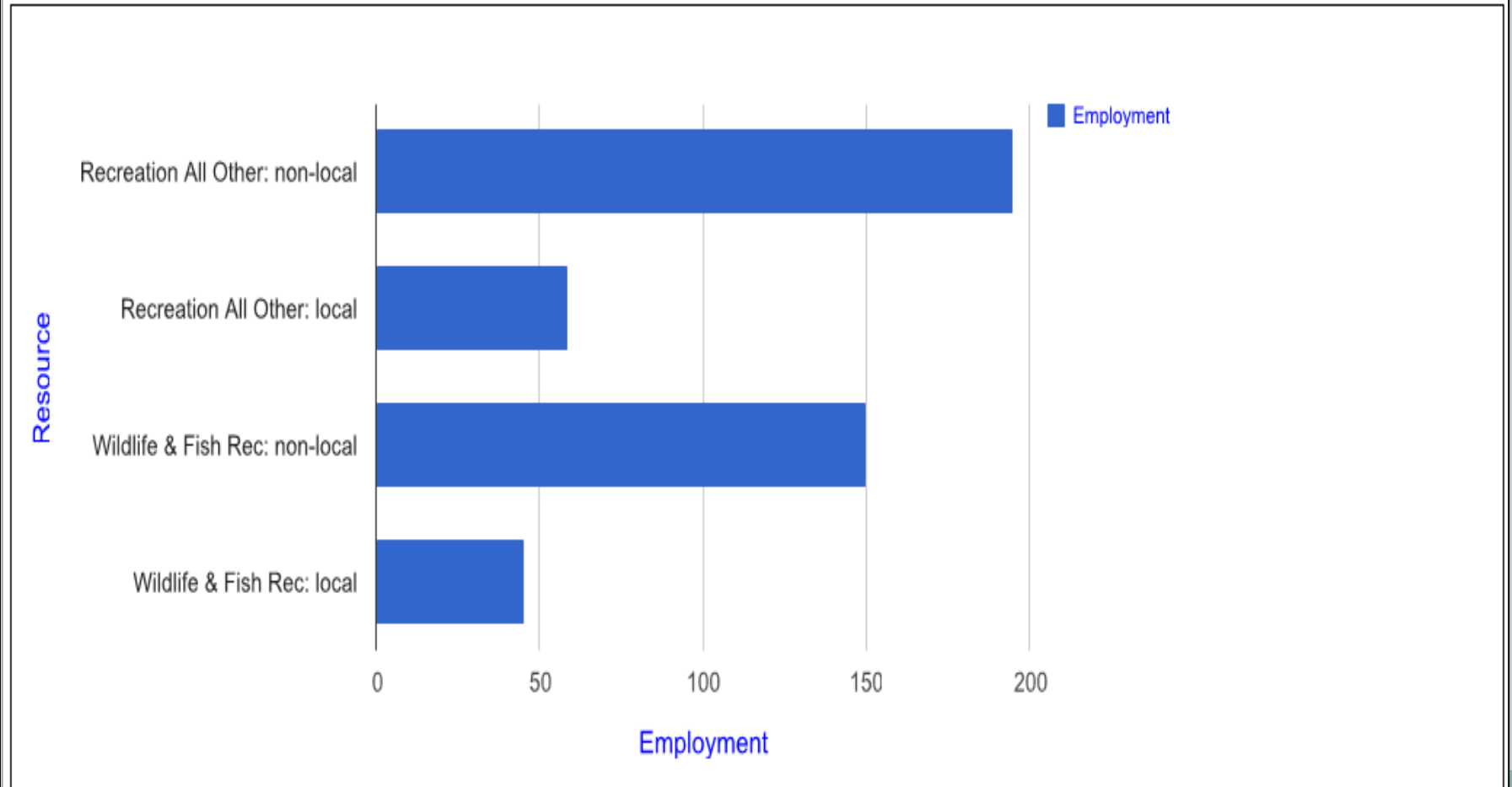


Results: Recreation Only

Regional Contact: Krista Gebert
kgebert@fs.fed.us

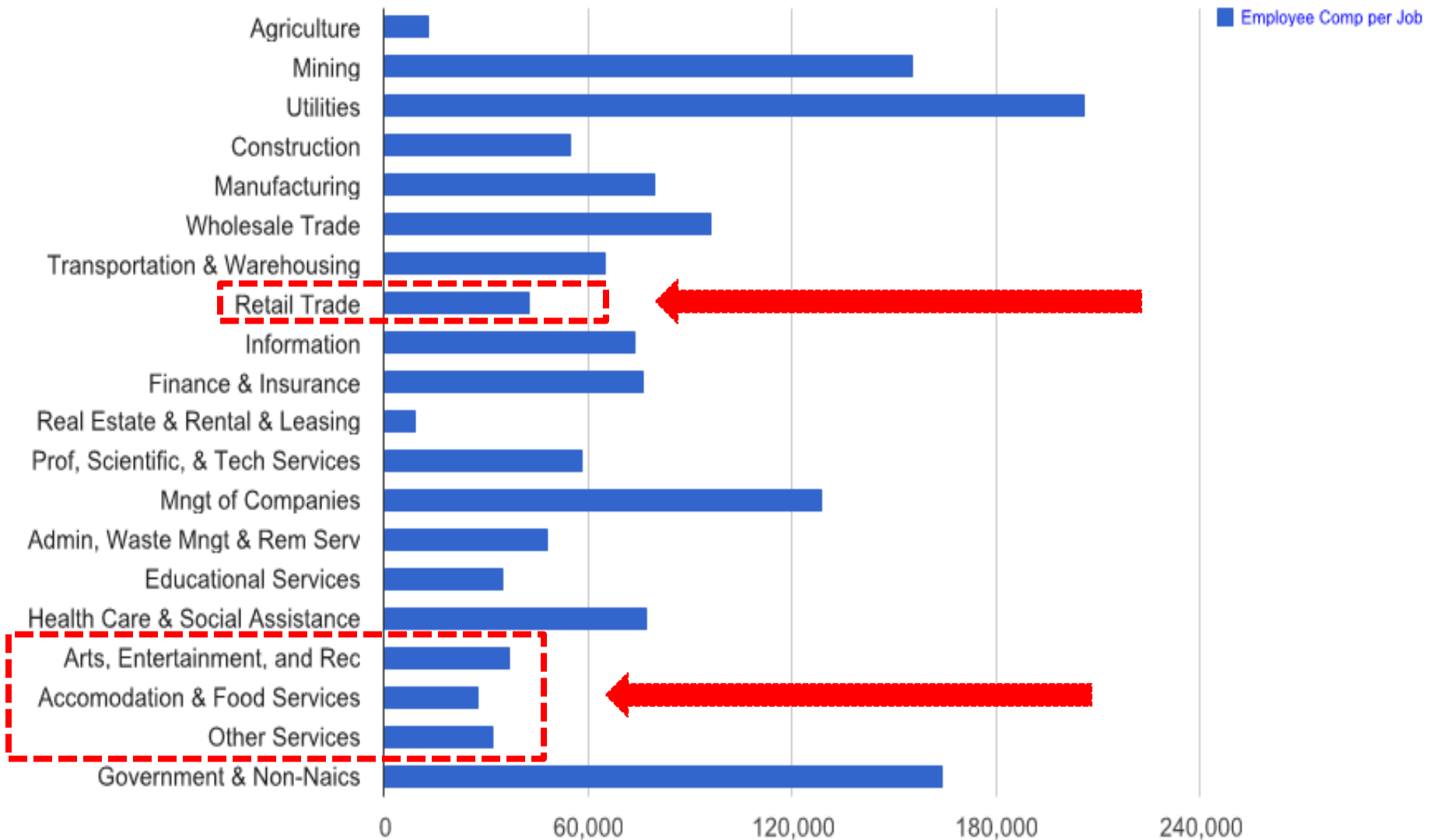
Beaverhead-Deerlodge National Forest

Employment (# Avg Annual Jobs)



Beaverhead-Deerlodge National Forest

Employee Compensation per Job (\$ 0.00)



Available Reports – Recreation Example

FSWeb: U.S. Forest Service Intranet

EMC FSWeb | WO FSWeb | FS WWW | USDA WWW |



National Forest Economic Contributions Intranet

You are here: [Home](#) : [Recreation](#) : NF Recreation Contributions: Total 2010

Topics

- Home
- All Resources Pilot
- Recreation-Only
- Glossary
- Frequently Asked Questions

Report Criteria

Region 1

Beaverhead-Deerlodge

Recreation

- Employment
- Labor Income
- Gross Regional Product
- Employee Compensation
- Employee Comp per Job
- Total Income

Draw Chart

[View Results for Multiple Forests](#)

U.S. National Forest Units: Total Current Recreation Economic Contributions 2010

Results: Recreation Only

This report displays Total Recreation Economic Contributions by National Forest. Please Select desired report criteria from the frame on the left and then click the "Draw Chart" button.

(1) Select a Region

(2) Select a Forest

(3) Select Contribution Measure

(4) Click Draw Chart to see the data displayed

Click here to display multiple forests

Available Reports – Recreation Example

18

Recreation-Only
Glossary
Frequently Asked Questions
Report Criteria

Region 1
Region 1
Region 2
Region 3
Region 4
Region 5
Region 6
Region 8
Region 9
Region 10
Regional Totals
Total Income

Draw Chart

View Results for Multiple Forests

Results: Recreation Only
This report displays Total Recreation Economic Co Forest. Please Select desired report criteria from t then click the "Draw Chart" button.

The same process is used to generate reports for single or multiple Regions.

Web Contact: Web Manager
Last Modified: Mo

Caveats:

Please read the fine print!

19

Note:

- These are **generic results** which will differ from results for specific purposes such as forest plan revision. Targeted results will differ due to differences such as:
 - **Analysis area:** The analysis areas for the models on this website were defined using a standard protocol across forests for comparability. This may not make sense for a targeted analysis such as for forest planning, restoration projects, etc.
 - **Data source:** The data used for the results on this website come from centralized data sources such as NRM. For targeted analyses the Region/Forest may have more up to date or tailored data sources.
 - **Average vs. annual:** For targeted results, it may make more sense to use 3 year averages to even out swings in the data. The data used for the results on this website are annual and from the year for which the result is reported.
- Forest level results **CANNOT be added up** to get state, regional or national totals due to overlapping analysis areas and trade flow calculations.
- Results are intended **for internal use (i.e. specialist)** only. For external communications regarding National Forest economic contributions, please consult a regional or WO economist first.

Questions?

20

