

# National Forests on the Edge

*A Forest on the Edge Study*

Sara J. Comas

USDA Forest Service, State & Private Forestry

Cooperative Forestry Staff

Western Forest Economists Meeting

Welches, Oregon - May 2, 2006

Draft – Not For Publication



# Today's Presentation...

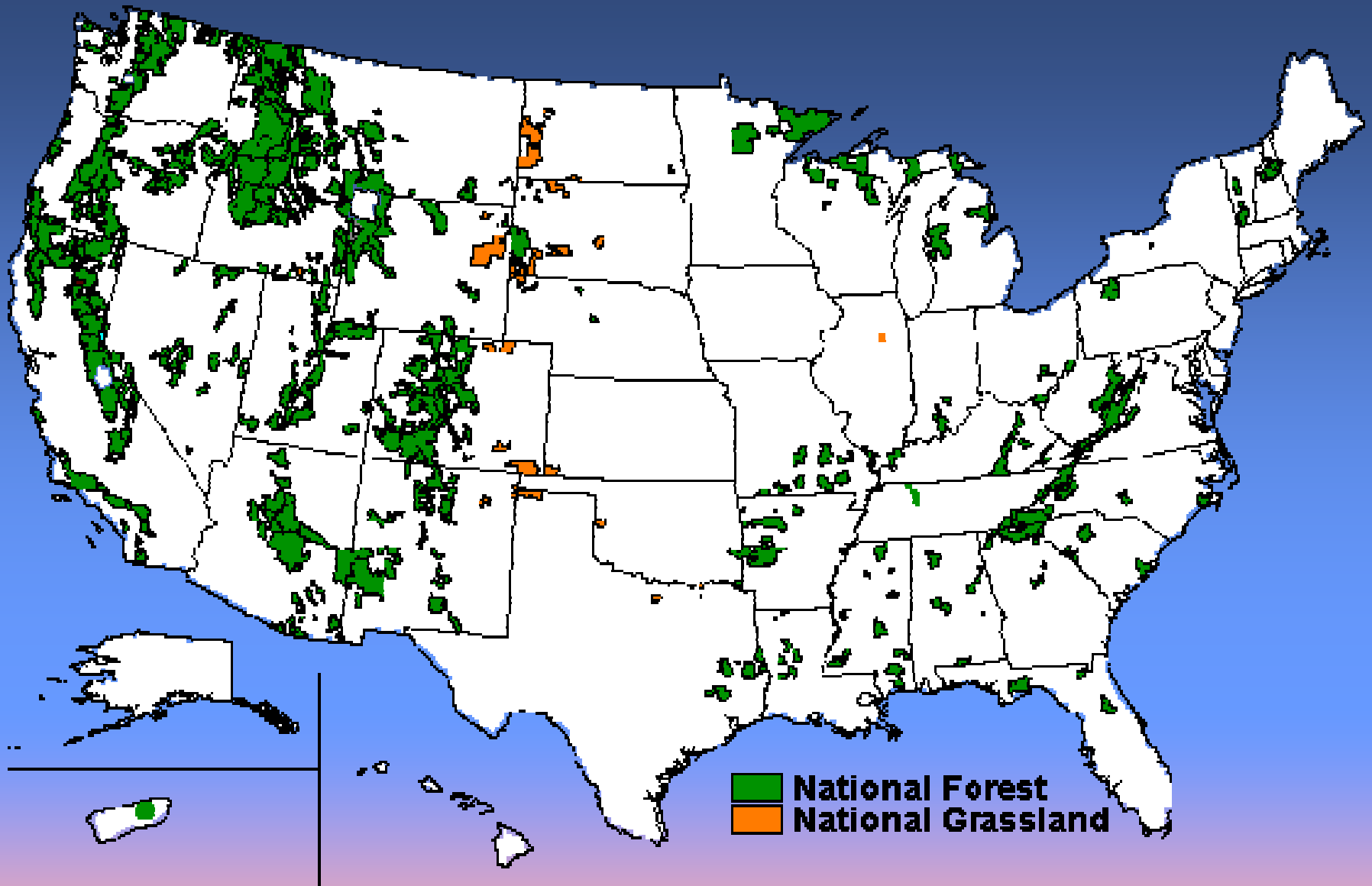
- Background
- Purpose
- Analysis
- Results (preliminary)
- Implications

# Contributors

- Susan Stein – USFS, Washington Office, S&PF
- Ken Cordell – USFS, Southern Research Station
- Ralph Alig – USFS, Pacific Northwest Research Station
- Mike Eley – American Farmland Trust
- Susan Yonts-Shepard – USFS, Washington Office, NFS
- John Haber – USFS, Region 1, Regional Office
- Sara Comas - USFS, Washington Office, S&PF

# Background

- 192.7 million acres
  - 4,300 campgrounds
  - 133,087 miles of trails
  - 135 alpine ski areas
  - 9,126 miles of National Forest Scenic Byways
- 205 million annual forest visits
- Recreational activities



Draft – Not For Publication

# Purpose

To provide information on:

- Potential implications of increased housing near forest/grassland boundaries;
- Identify those areas; and
- Provide tools for planning.

# Analysis

Projected housing density changes within three distances of national forest/grassland boundaries:

- 0 to ½ mile
- ½ to 3 miles
- 3 to 10 miles

# Analysis

Housing density projections were based on many factors:

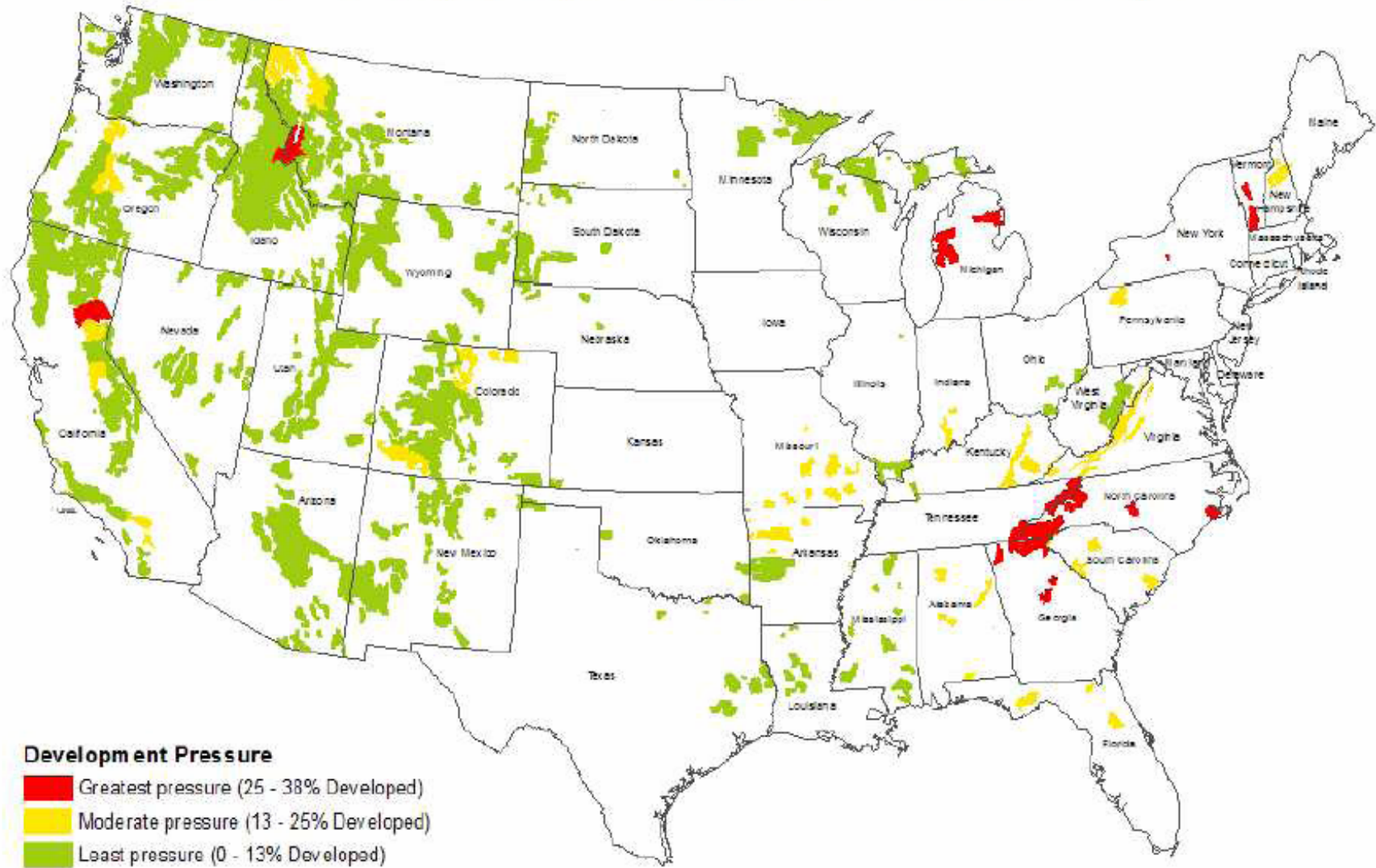
- Past/current statistics on housing density and population
- Road density data
- Past growth patterns
- Locations of urban areas



# About these maps...

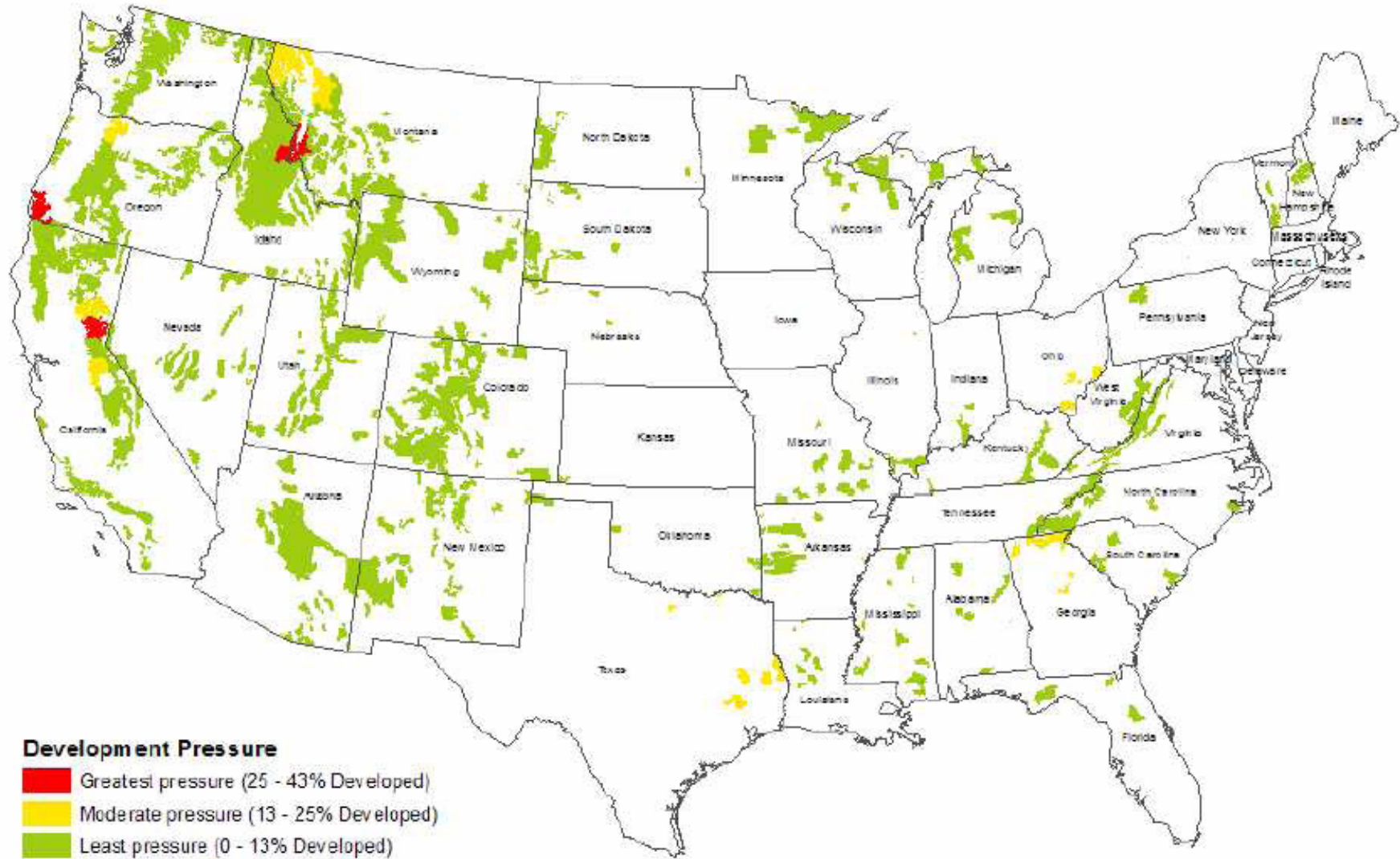
They rank forest and grasslands according to the percentage of land within a specified buffer width that is projected to experience an increase in housing density.

## NEW DEVELOPMENT WITHIN 1/2 MILE OF NATIONAL FORESTS OR GRASSLANDS



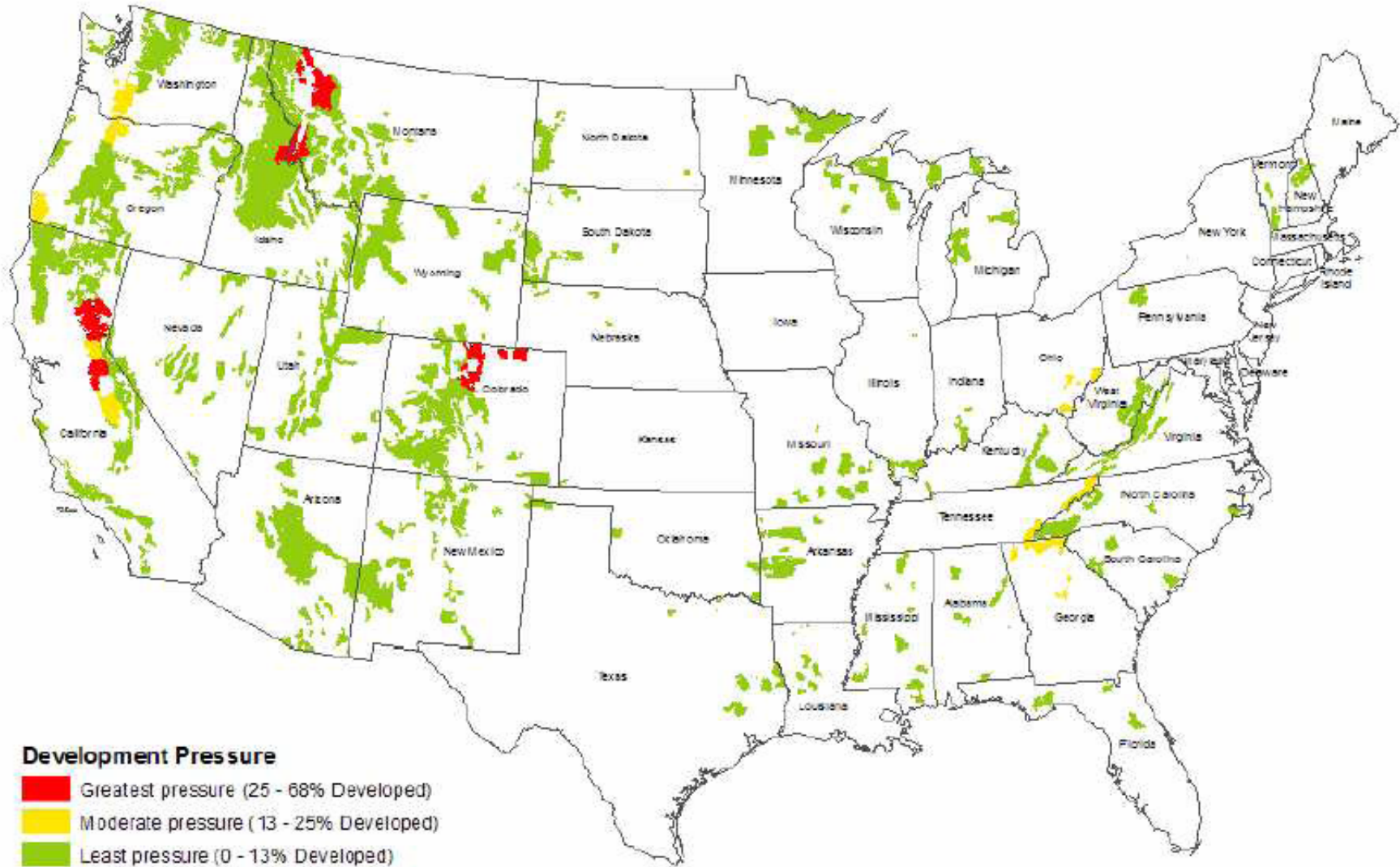
Draft – Not For Publication

## NEW DEVELOPMENT FROM 1/2 TO 3 MILES OF NATIONAL FORESTS OR GRASSLANDS



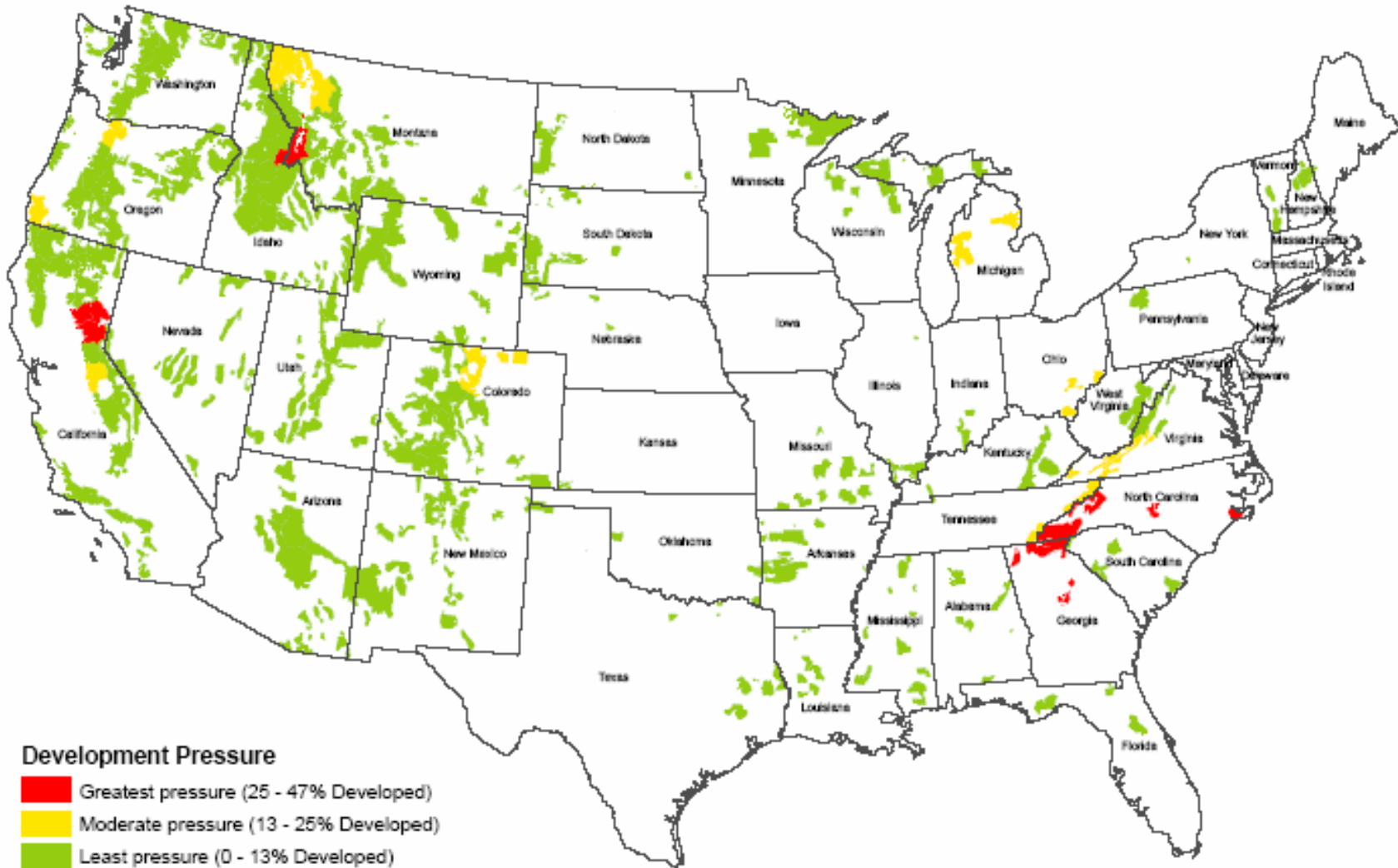
Draft – Not For Publication

## NEW DEVELOPMENT FROM 3 - 10 MILES OF NATIONAL FORESTS OR GRASSLANDS



Draft – Not For Publication

## NEW DEVELOPMENT FROM 0 - 10 MILES OF NATIONAL FORESTS OR GRASSLANDS



**West**

Forest Name	State	Buffer Width (miles)			
		0 - 1/2	1/2 - 3	3 - 10	0 - 10
Bitterroot	ID, MT	X	X	X	X
Flathead	MT			X	
Plumas	CA	X		X	
Tahoe	CA		X	X	X
Stanislaus	CA			X	X
Siskiyou	OR		X		
Roosevelt	CO			X	
Pawnee (grasslands)	CO			X	
Huron/Manistee	MI	X			
Green Mountain	VT	X			
Forests of North Carolina*	NC	X			X
Forests of Georgia**	GA	X			X

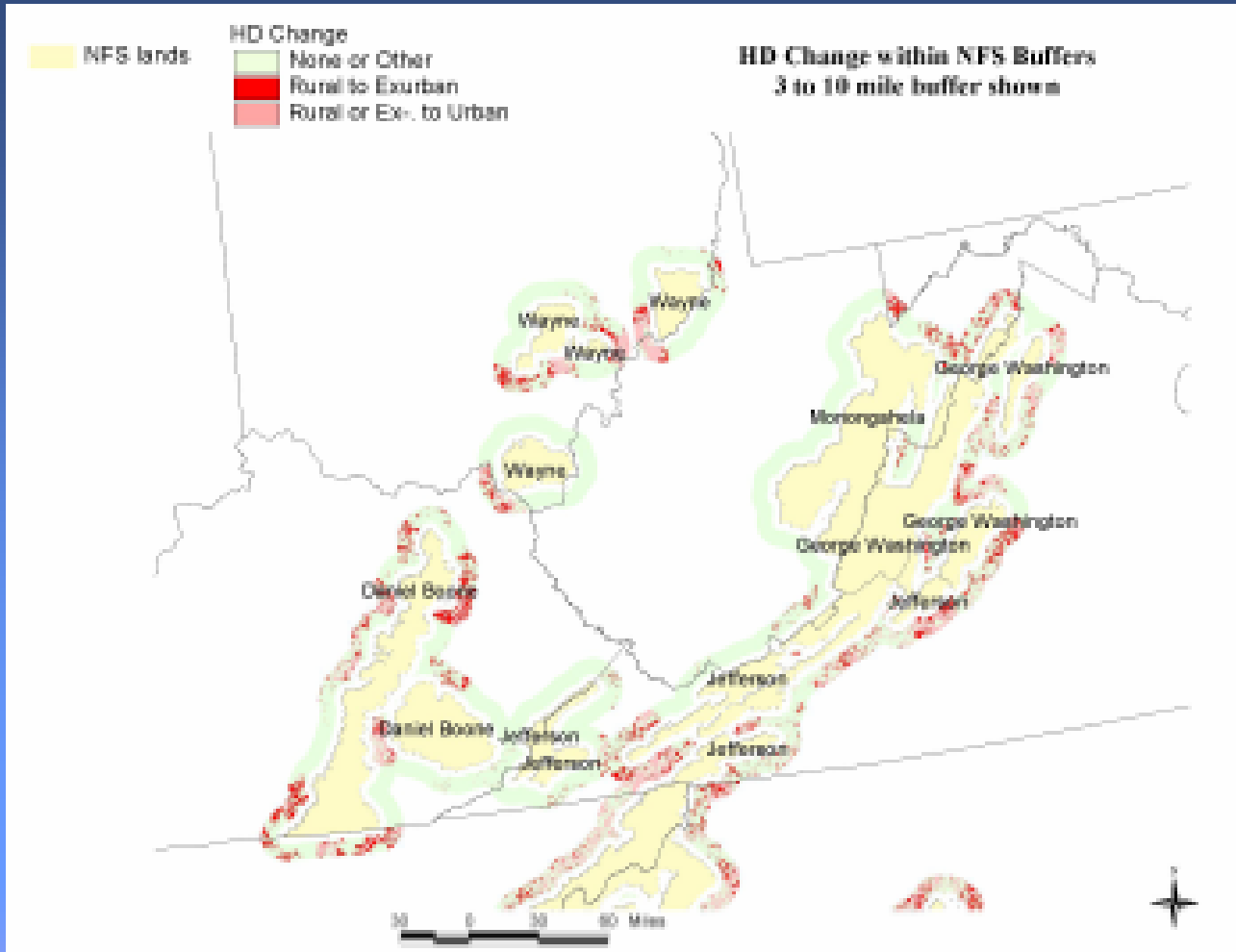
**East**

**\*Forests of North Carolina: Croatan, Nwharrie, Pisgah, Nantahala, and Cherokee.**

**\*\*Forests of Georgia: Oconee and Chattahoochee.**

# Implications

- Increased human-animal conflicts
- Alteration of tree and plant species composition
- Increased demand for recreational opportunities
- Increased fire risk (wildland/urban interface)
- Altered hydrologic cycles





# Questions?

Draft – Not For Publication

# Contact Information

- Sara Comas
  - (202)205-1572 or [scomas@fs.fed.us](mailto:scomas@fs.fed.us)
- Susan Stein
  - (202)205-0837 or [sstein@fs.fed.us](mailto:sstein@fs.fed.us)