

Sustainable Forestry in Oregon



ROLE OF ECONOMIC ANALYSIS VERSUS OTHER SOCIAL AND ENVIRONMENTAL CRITERIA

MAY 4, 2010



**Nancy Hirsch
State Forests Division Chief
Oregon Department of Forestry**

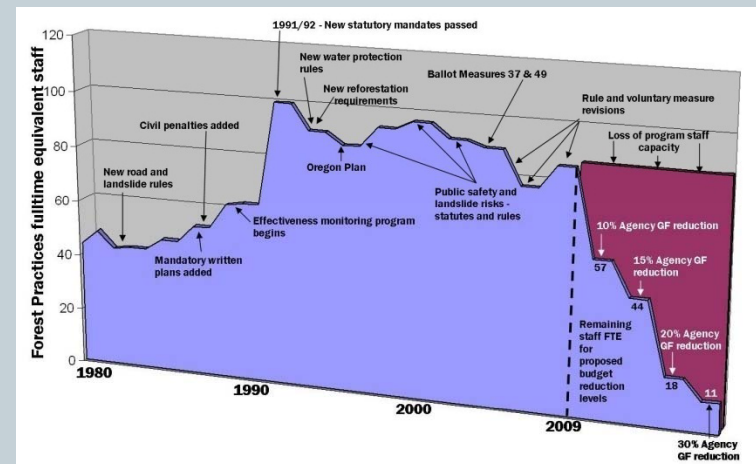
Presentation overview



- **Current Issues**
- **The Board of Forestry**
 - Forestry Program for Oregon
 - 19 Oregon Indicators of Sustainable Forest Management
- **State Forests**
 - Policy
 - Performance measures
 - Revised forest management plans
 - Ongoing review and improvement

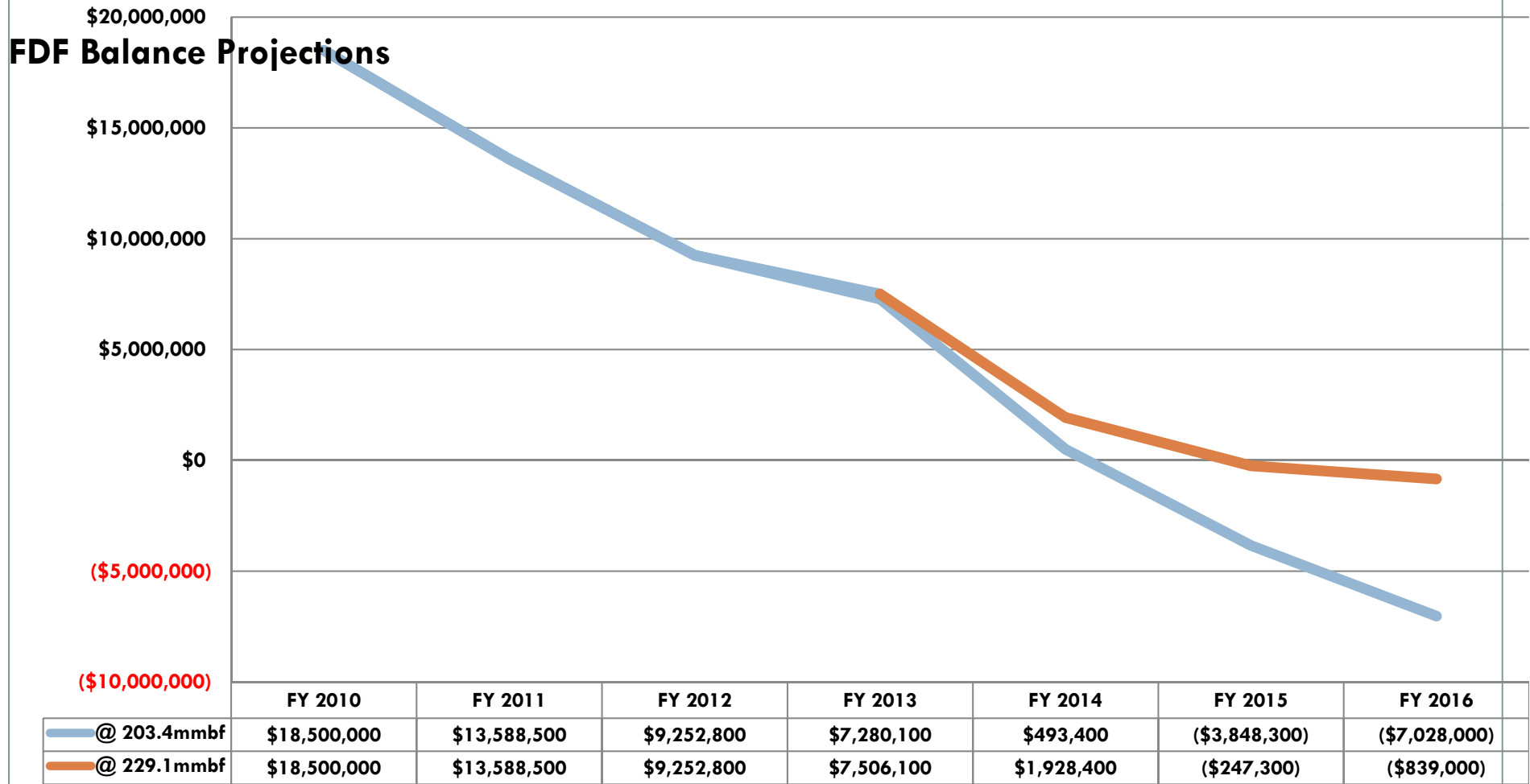
Current Issues

- **Stable and sufficient funding**
 - Coalition work group
- **Keeping forestland intact and in forest use**
 - Population trend and development pressure
 - Incentives



Fund Balance based on revenue scenarios :

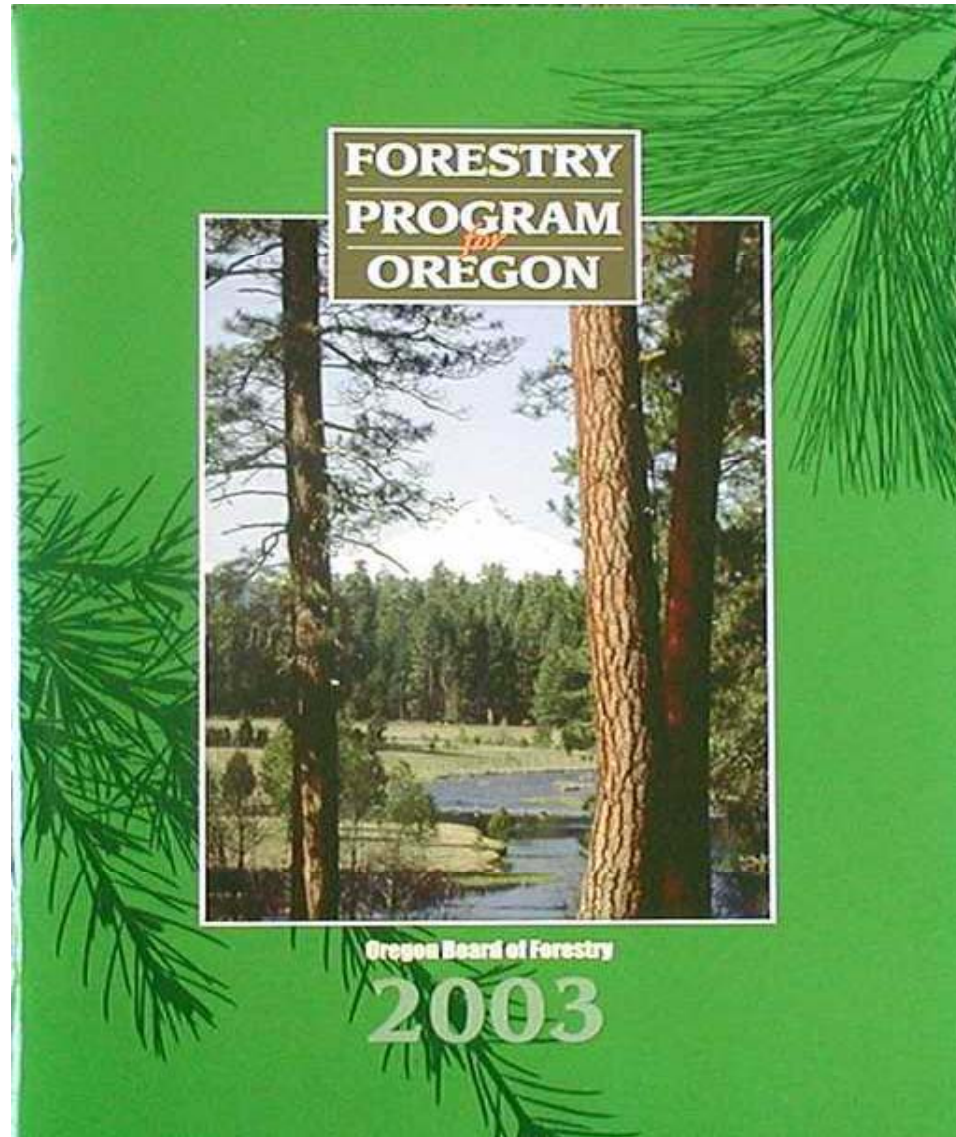
- 1) Current Plans (203 mmbf)
- 2) Revised Plans (increases to 229 mmbf in 2012)

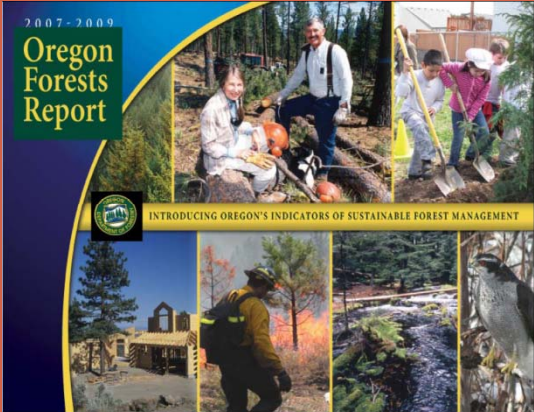




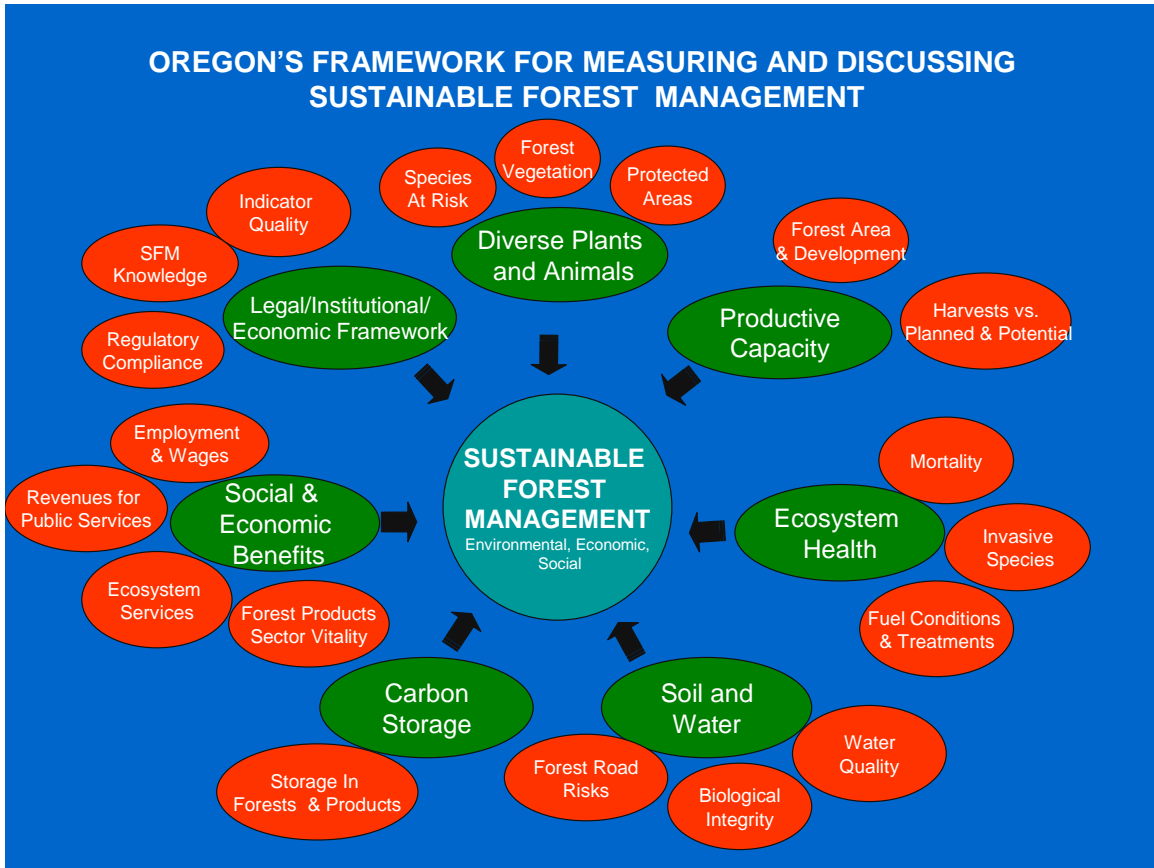
Board of Forestry

Supervises all matters of forest policy





19 Indicators

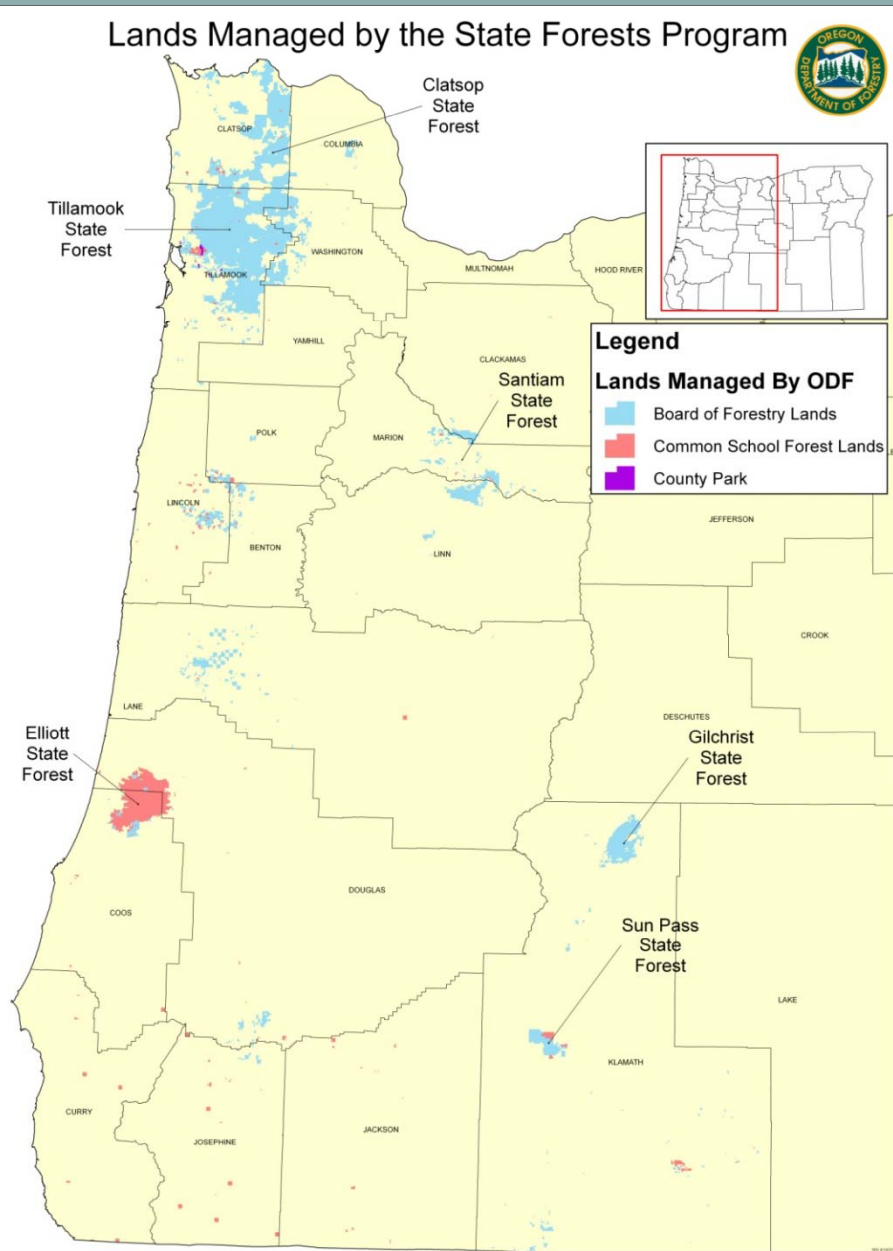


Sustainable Forest Management Framework

State Forests



Lands Managed by the State Forests Program



Greatest Permanent Value



- GPV means
 - Healthy, productive, and sustainable forest ecosystems that over time and across the landscape provide a full range of social, economic, and environmental benefits to the people of Oregon.
 - 2001 Forest Management Plans



2007 Board adopted PM

2007 Board targets

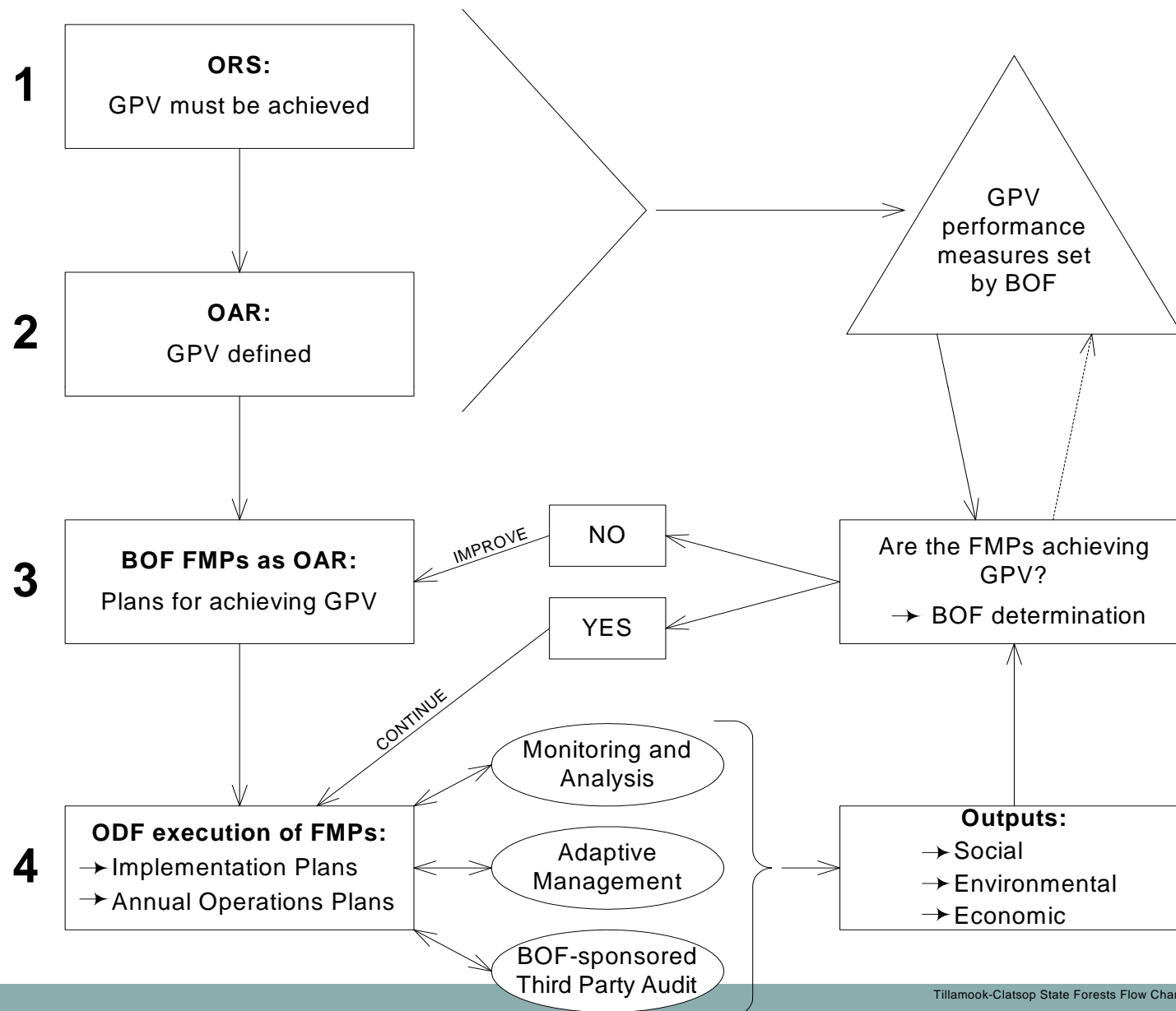
Ongoing improvement



Social	Economic	Environmental
Volunteers Education Recreation	Revenues Jobs Indirect benefits	Wildlife Habitat Water quality Fish passage Healthy Forests

Performance Measures

Greatest Permanent Value: Policy, Planning, and Implementation Framework



Performance Measures - general targets



- Net Return on Asset Value
- Financial Contributions to Communities
- Recreation
- Forest Health
- Public & Stakeholder Involvement
- Oregonian's Awareness & Support

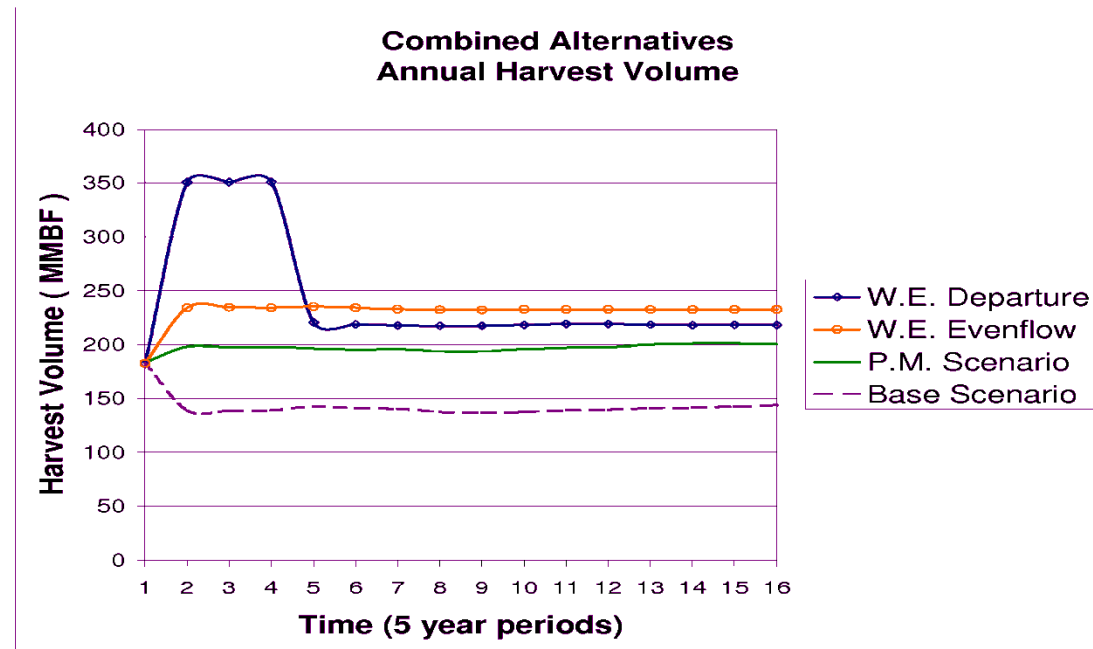
Performance Measures – specific targets



- Wildlife Habitat
- Financial Contributions to Local and State Government Services
- Forest Road Risks and Fish Habitat



June 2009 - Evaluating achievement of Performance Measures



2010 Revised Forest Management Plans

On going review and improvement



- **Revise and improve management to produce optimal levels of benefits**
 - 2010 NW and SW Oregon
 - 2012 Elliott State Forest
- **Board work on performance measures**
- **Biennial performance measure reports**

Questions



[www.oregon.gov/ODF/PUBS/docs/Oregon Forests Reports/OFR 2007.pdf](http://www.oregon.gov/ODF/PUBS/docs/Oregon_Forests_Reports/OFR_2007.pdf)

[www.oregon.gov/ODF/BOARD/docs/November 6 2008/1 Att 3.pdf](http://www.oregon.gov/ODF/BOARD/docs/November_6_2008/1_Att_3.pdf)

